

TREASURE CRAFTS

Ahoy ye pirates! Here be some super fun pirate crafts for you and your crew!

Make all these piratey crafts by printing the pages of this Treasure Crafts kit. **You will need: Scissors » Tape » Thick Paper**

BUILD THE FOREVER SWORD!

Lead your crew, like Jake, by crafting a sword made from the Forever Tree in Never Land! See pages 2-4 for template and instructions.



MAKE YOUR OWN PIRATE HAT!

Play the courageous Pirate Princess with this beautiful purple and lavender pirate hat.

See pages 5-6 for template and instructions.



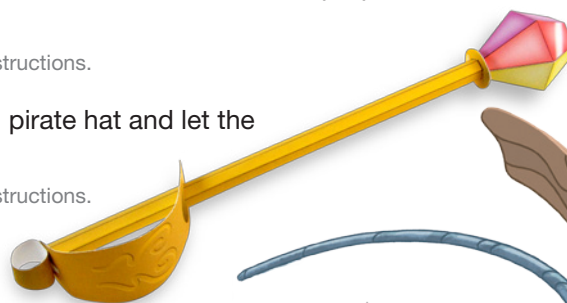
Gear up with this never land pirate hat and let the swashbuckling begin!

See pages 7-8 for template and instructions.

FORGE THE RAINBOW WAND!

Construct this Pirate Princess rainbow wand and lead your friends with magical rainbows!

See pages 9-11 for template and instructions.



CREATE A TREASURE CHEST!

Create Skully's Never Land Treasure Chest and fill it with gold doubloons.

See pages 12-15 for template and instructions.



HAPPY PIRATE CRAFTING!

**ON DVD+DIGITAL COPY
APRIL 3**





THE FOREVER SWORD

Ask an adult to help you
with this craft.

BLADE



FRONT

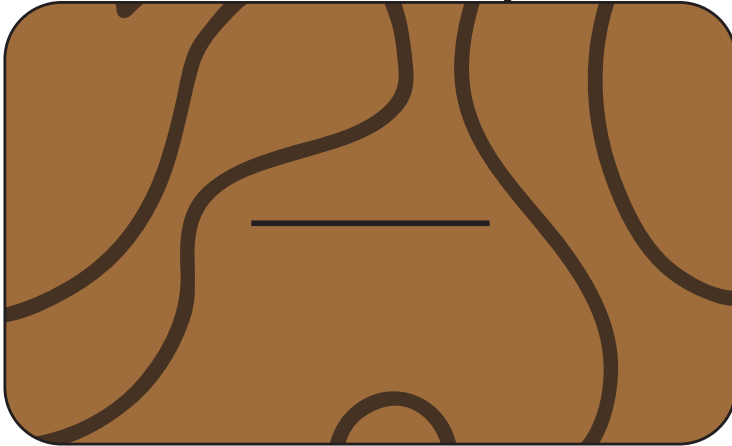


THE FOREVER SWORD

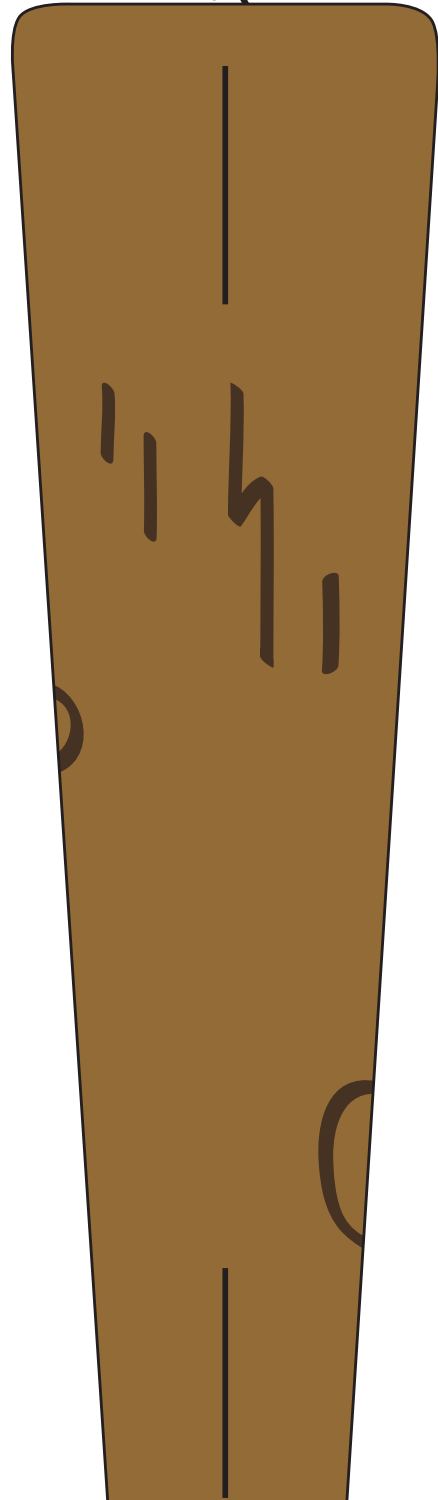
Ask an adult to help you with this craft.



CROSSBAR



GUARD



GRIP





THE FOREVER SWORD

Ask an adult to help you with this craft.



Instructions

Cutting and scoring intended for grown-ups only.

TIP: For best results, use a thicker paper, such as cover stock with a weight of 60-100 lbs.

MATERIALS:

- Butter knife
- Scissors or craft knife
- Cutting mat (optional)
- Non-toxic multipurpose glue

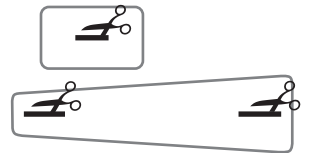
1. Score along all the dotted lines.



2. Cut out all pieces along the outer solid lines. For now, only cut along the outer box for the blade and grip.



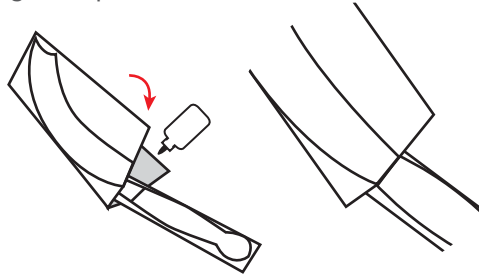
3. Carefully cut the slits in the crossbar and guard.



4. Fold grip along dotted lines and glue closed.



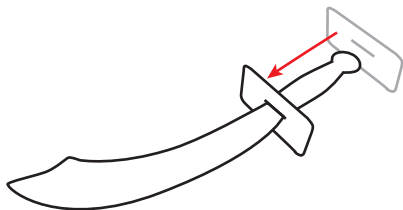
5. Fold blade along dotted line. Align the front side of grip and blade, as shown below, and glue in place.



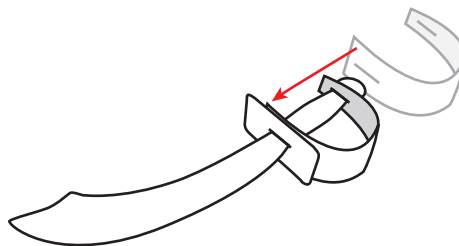
6. Cut out sword along the outer solid lines.



7. Slide crossbar onto grip.



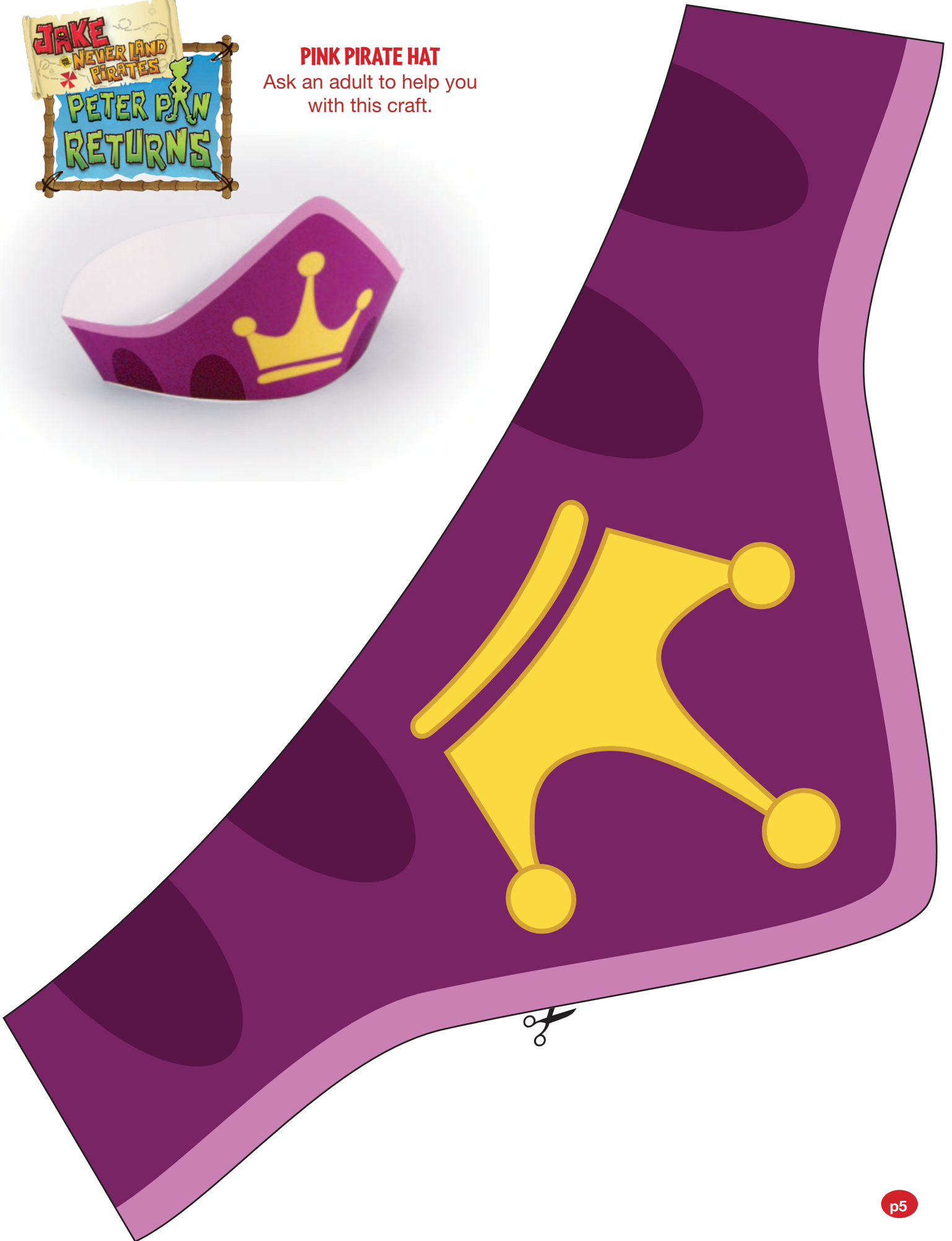
8. Slide guard onto grip and you're done!





PINK PIRATE HAT

Ask an adult to help you
with this craft.



PINK PIRATE HAT

Ask an adult to help you with this craft.



Instructions

Cutting and scoring intended for grown-ups only.

MATERIALS:

Butter knife
Scissors or craft knife
Cutting mat (optional)
Non-toxic multipurpose glue

1. Score along all the dotted lines.



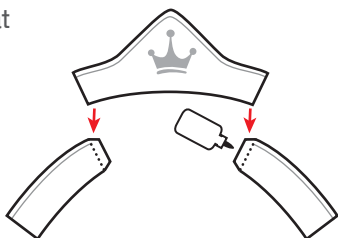
2. Cut along all the solid lines.



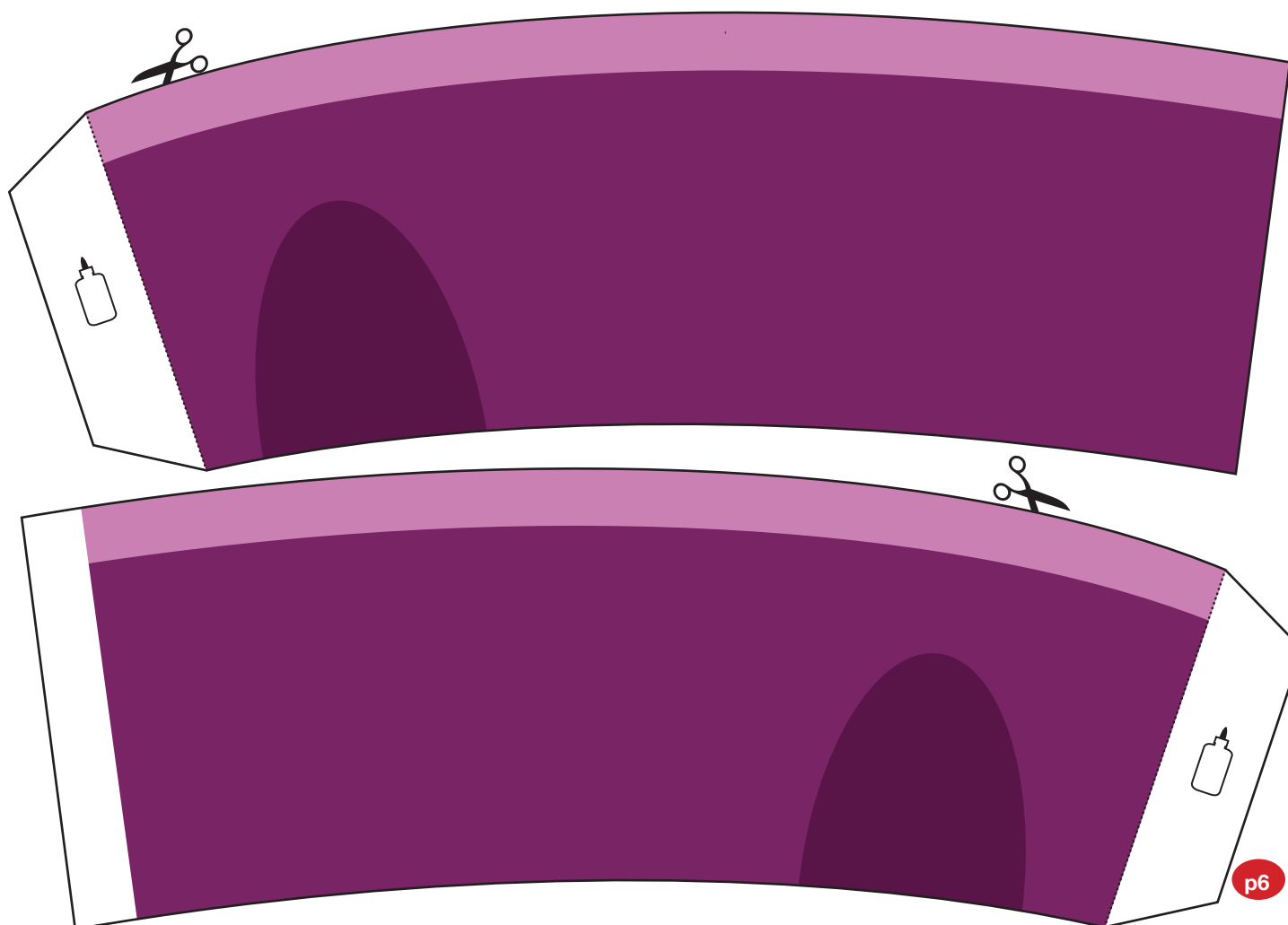
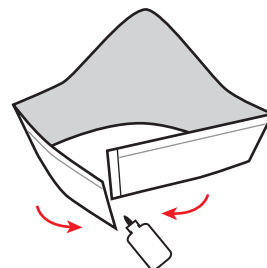
3. Use the mountain fold on dotted lines.



4. Glue front of hat to the hat bands as shown, with pink stripe facing up.



5. Adjust hat bands to fit head comfortably and glue in place.





BLUE PIRATE HAT

Ask an adult to help you
with this craft.



BLUE PIRATE HAT

Ask an adult to help you with this craft.



Instructions

Cutting and scoring intended for grown-ups only.

MATERIALS:

Butter knife
Scissors or craft knife
Cutting mat (optional)
Non-toxic multipurpose glue

1. Score along all the dotted lines.



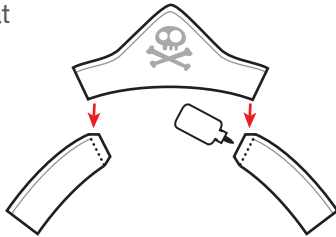
2. Cut along all the solid lines.



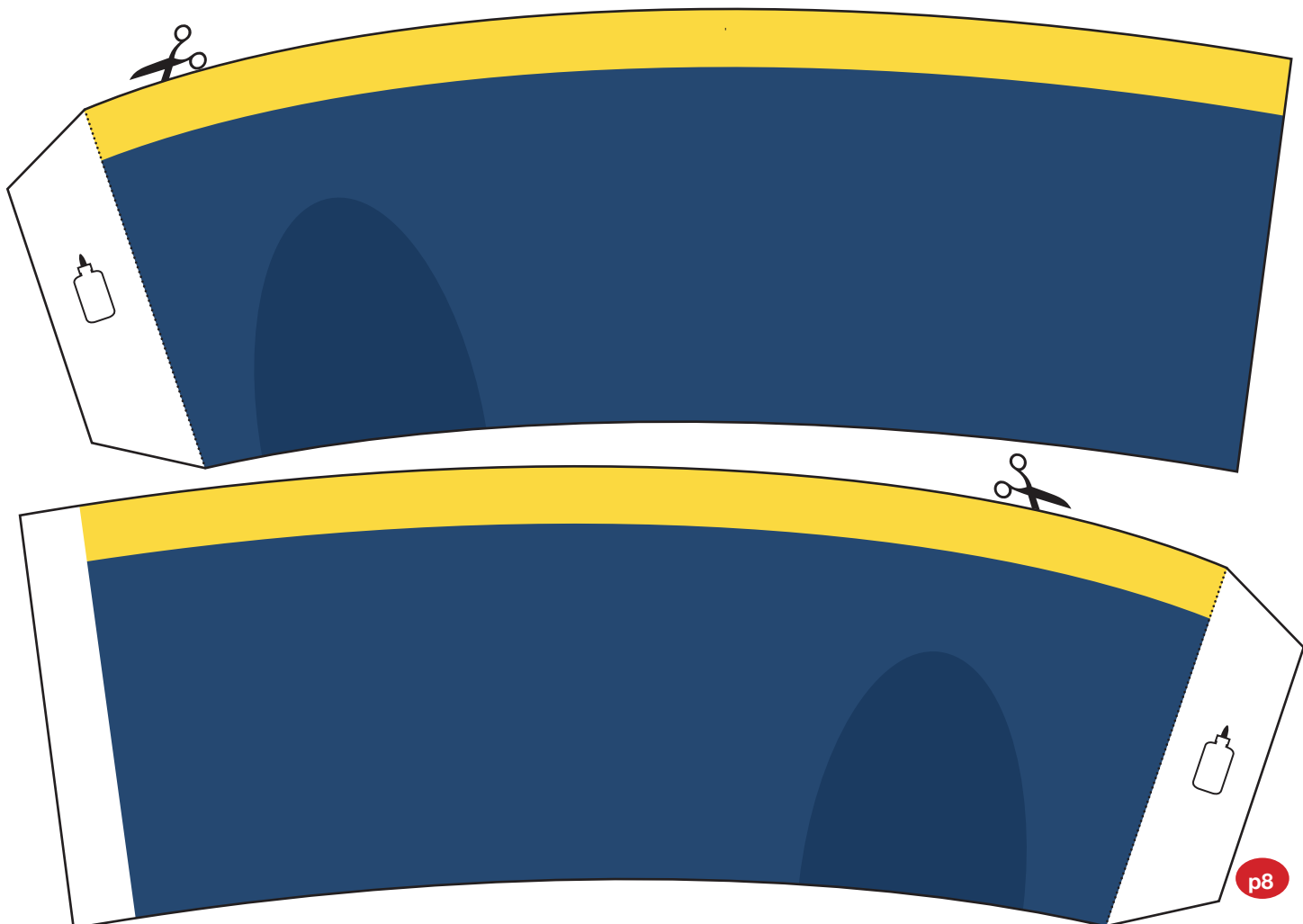
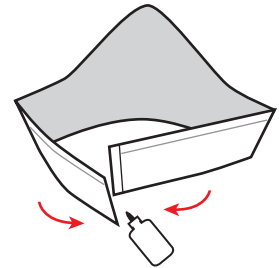
3. Use the mountain fold on dotted lines.



4. Glue front of hat to the hat bands as shown, with yellow stripe facing up.



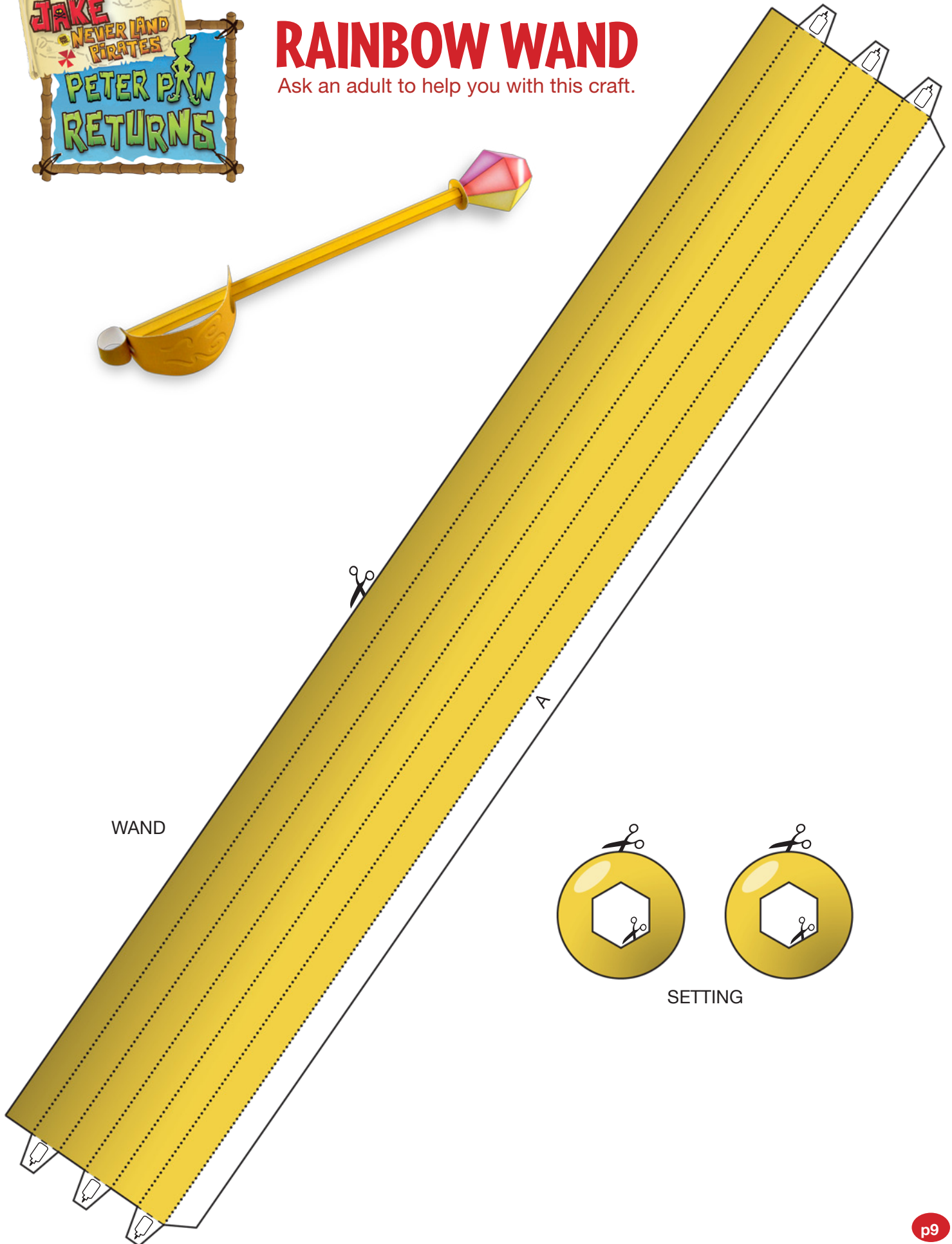
5. Adjust hat bands to fit head comfortably and glue in place.





RAINBOW WAND

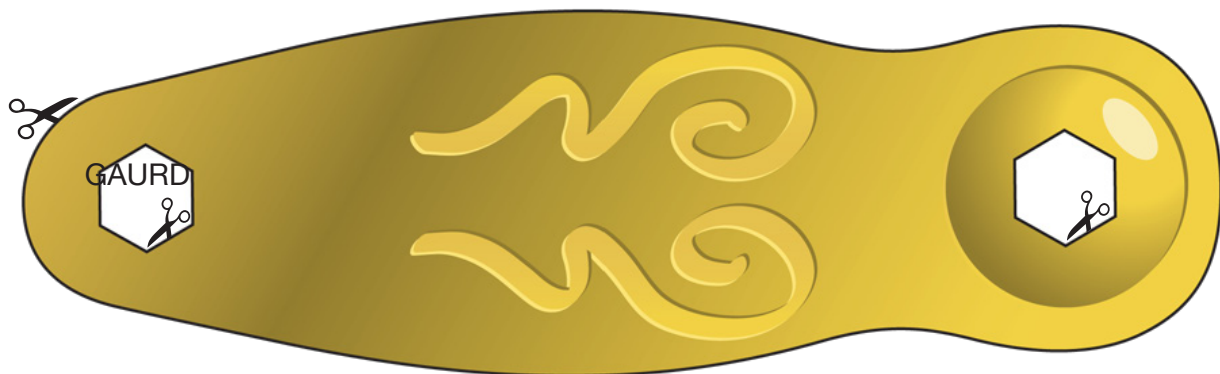
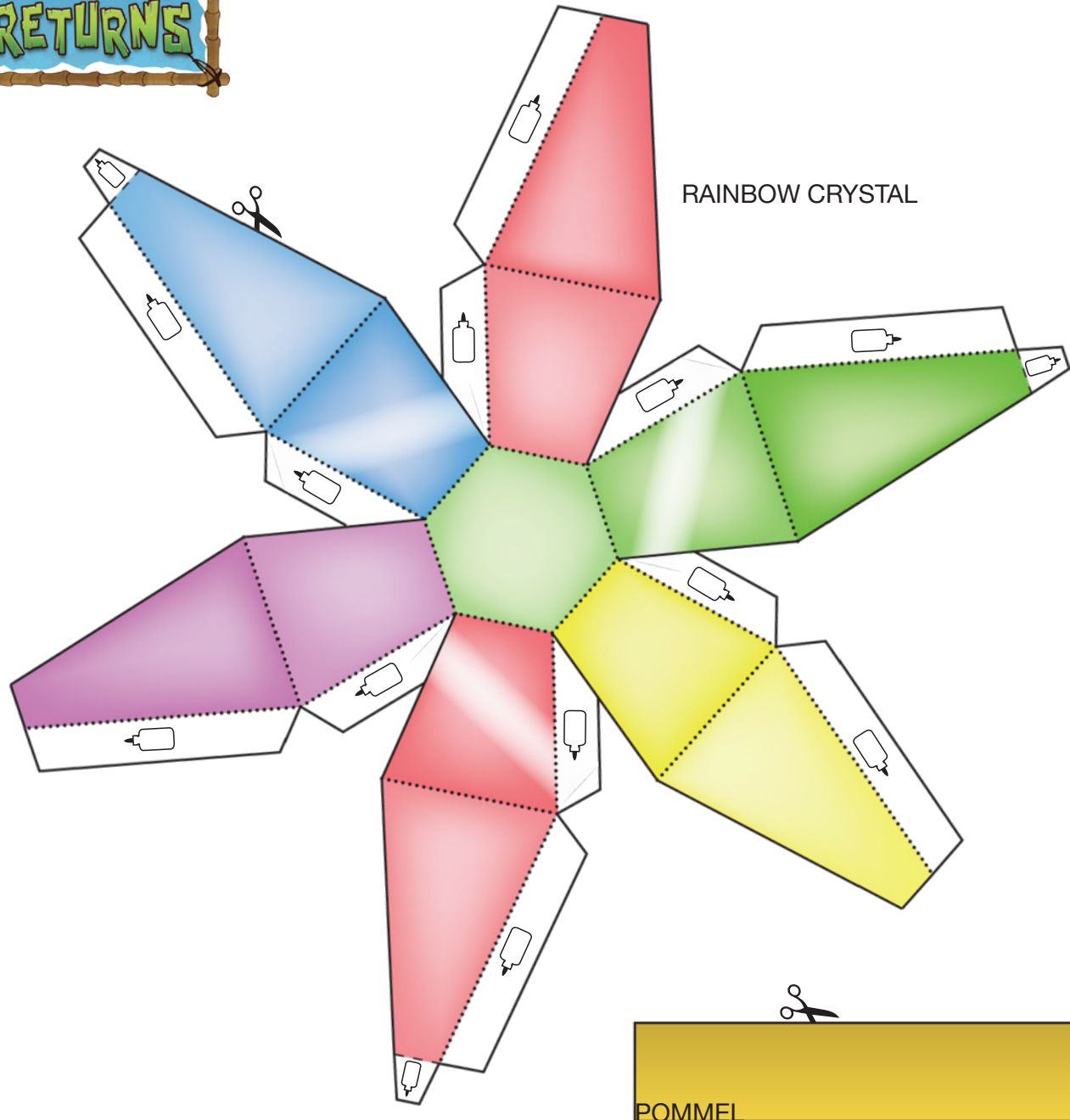
Ask an adult to help you with this craft.





RAINBOW WAND

Ask an adult to help you with this craft.





RAINBOW WAND

Ask an adult to help you with this craft.



Instructions

Cutting and scoring intended for grown-ups only.

MATERIALS:

- Metal-edged ruler
- Butter knife
- Scissors or craft knife
- Cutting mat (optional)
- Non-toxic multipurpose glue

1. Score along all the dotted and dashed lines.



2. Cut along all the solid lines.



3. Use mountain folds on dotted lines. Use valley folds on dashed lines.

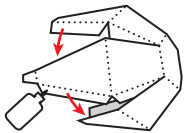


mountain fold

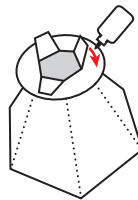


valley fold

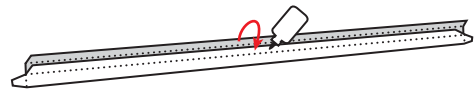
4. *Create the rainbow crystal:* Apply glue to the tabs and fold in place.



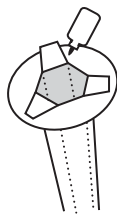
5. Insert bottom tabs through one of the settings, making sure the yellow side faces the crystal. Fold tabs outward and glue to white side of setting.



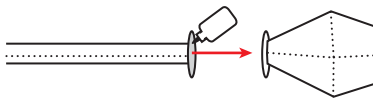
6. *Create the wand:* Apply glue to tab A and attach to the opposite side.



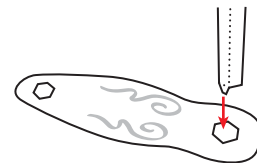
7. Insert tabs on one end of wand through second setting. Fold tabs outward and glue on white side of setting.



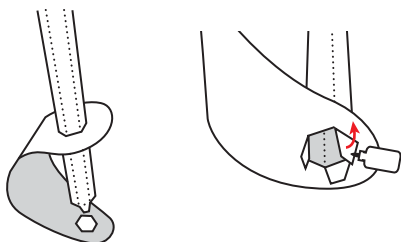
8. Attach the rainbow crystal to the wand by gluing the settings back to back.



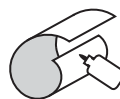
9. *Add the guard:* Insert other end of wand through top hole in the guard.



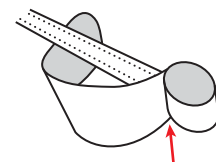
10. Curl guard under and insert wand through second hole in guard. Fold tabs outward and glue in place.



11. *Add the pommel:* Apply glue to end of pommel and roll over to glue in place.



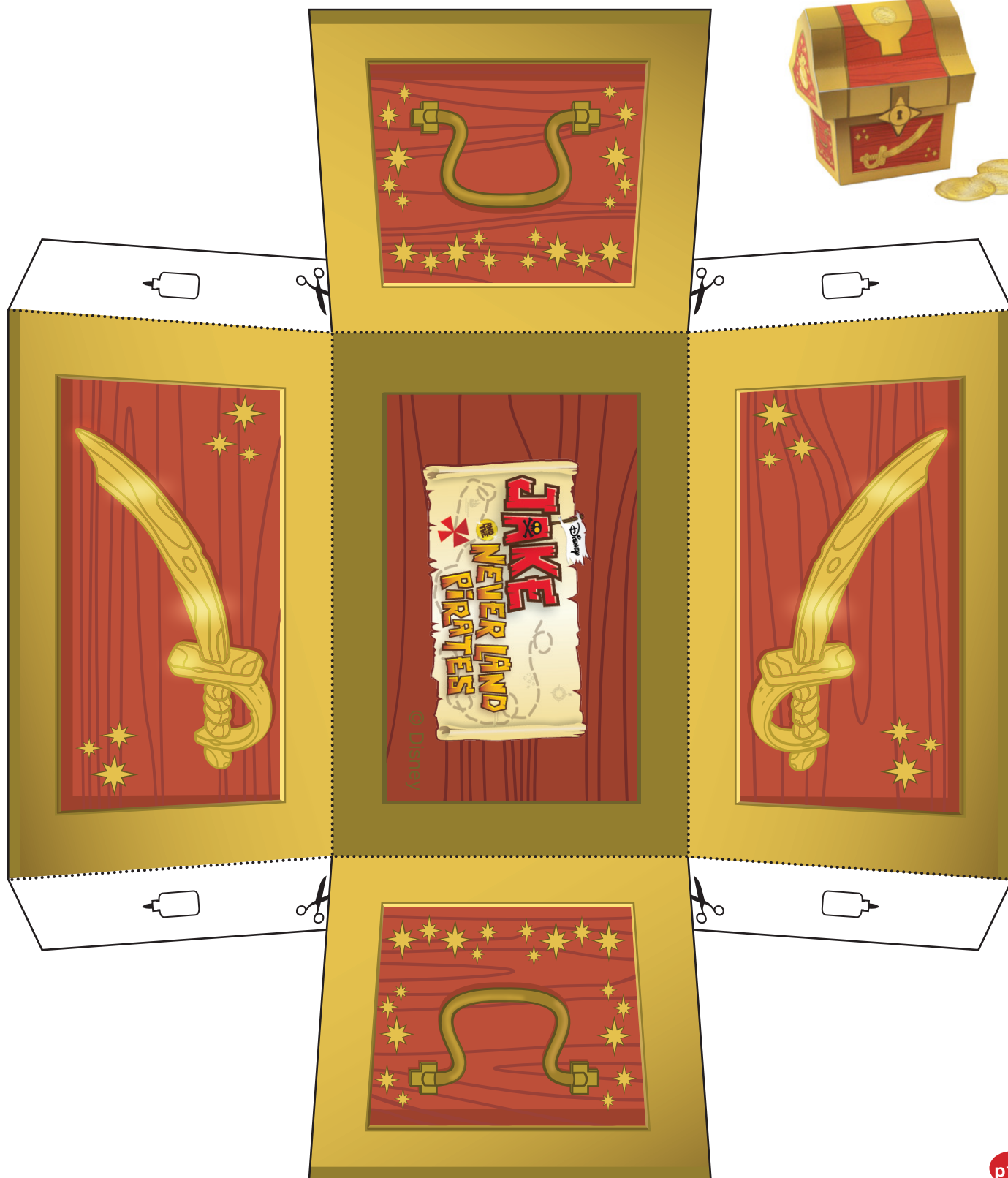
12. Glue the pommel to the bottom of the guard. You're done!





TREASURE CHEST

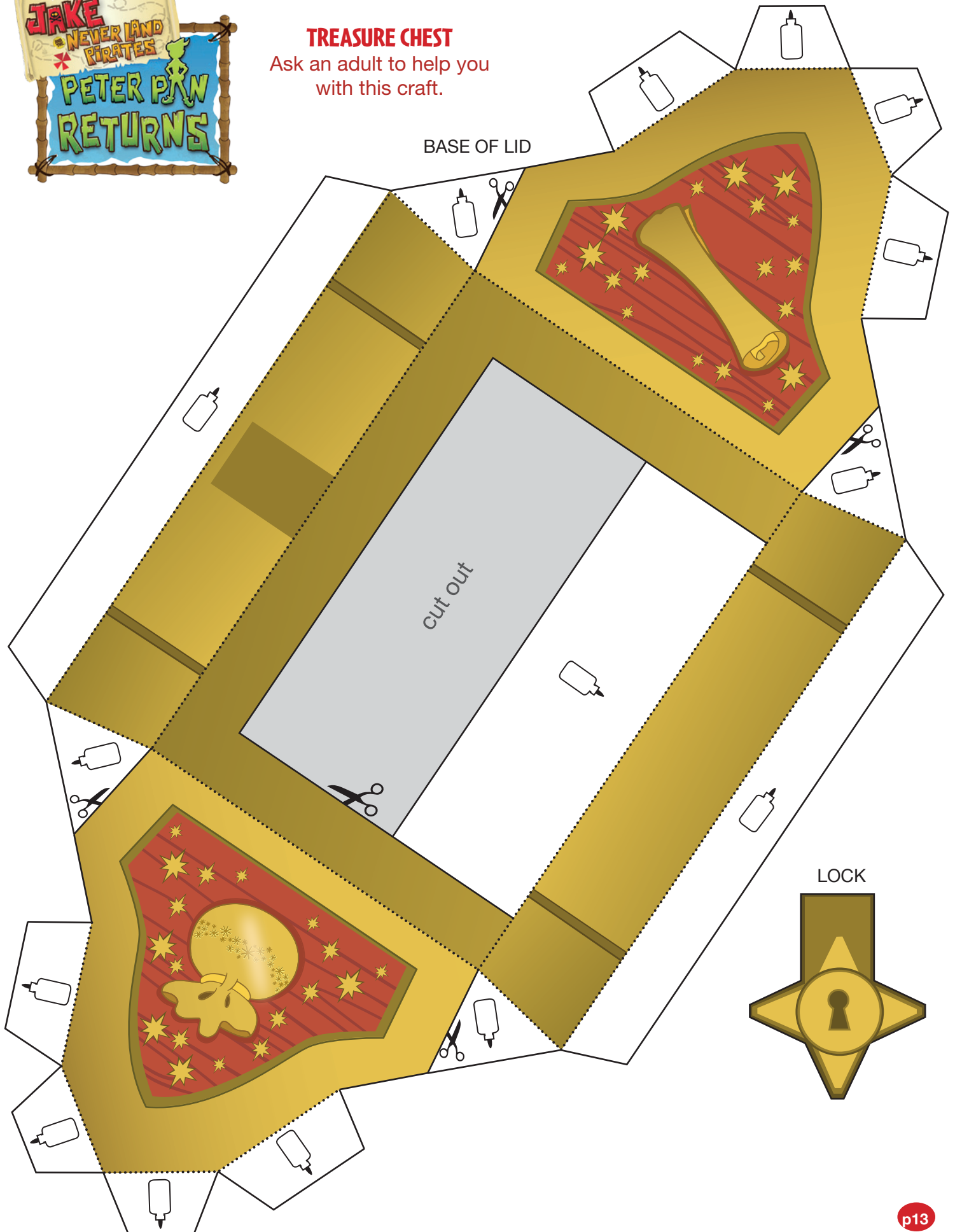
Ask an adult to help you with this craft.





TREASURE CHEST

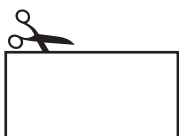
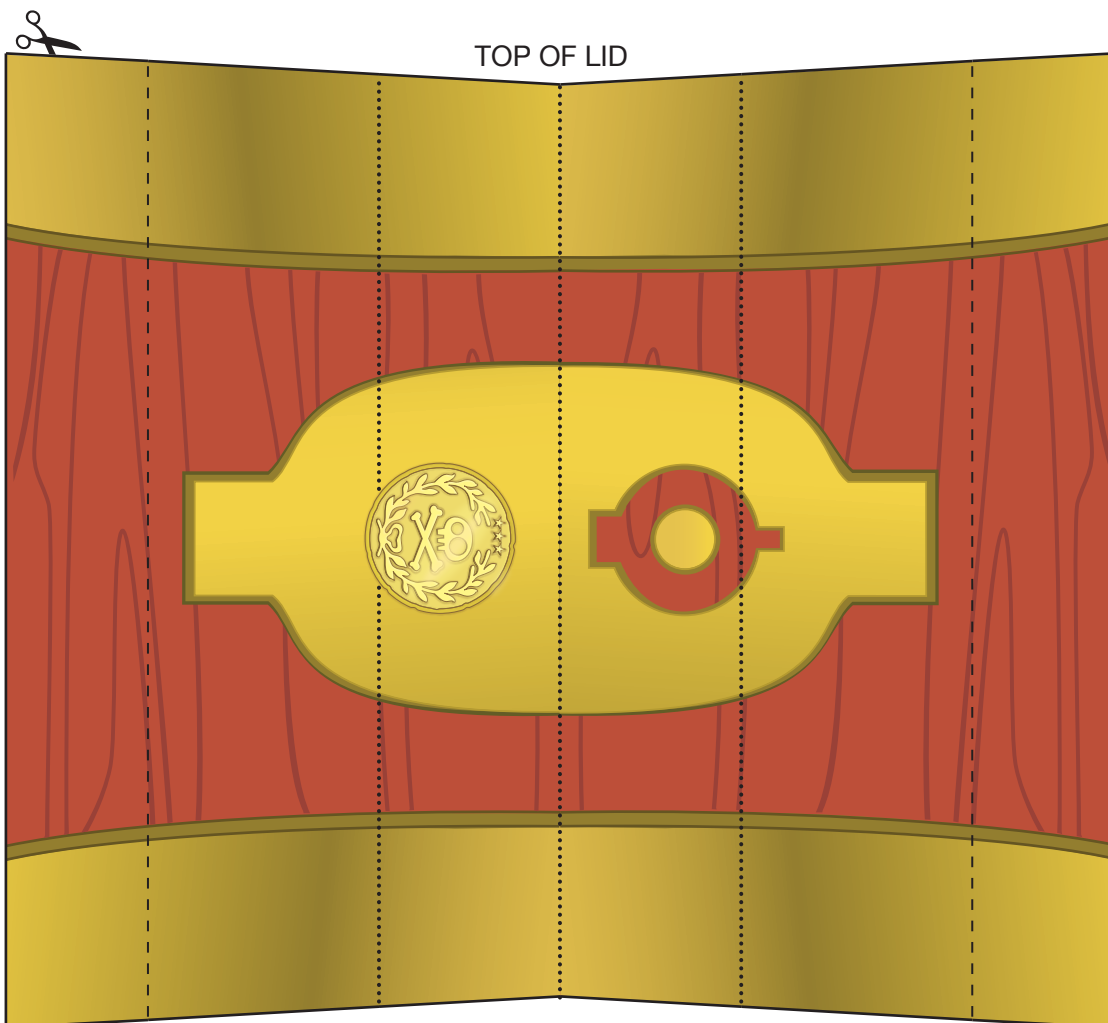
Ask an adult to help you
with this craft.





TREASURE CHEST

Ask an adult to help you with this craft.



DOUBLOONS





TREASURE CHEST

Ask an adult to help you with this craft.

Instructions

Cutting and scoring intended for grown-ups only.



MATERIALS:

- Metal-edged ruler
- Butter knife
- Scissors or craft knife
- Cutting mat (optional)
- Non-toxic multipurpose glue

1. Score along all the dotted and dashed lines.



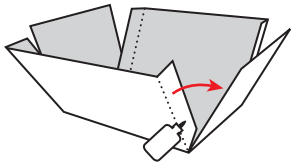
2. Cut along all the solid lines.



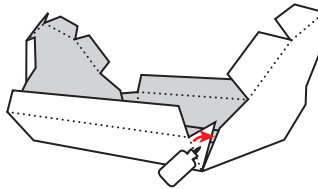
3. Use the mountain fold on dotted lines, and use the valley fold on dashed lines.



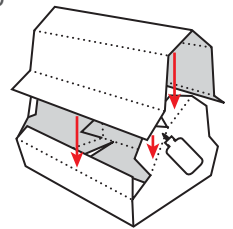
4. *Create the base:* Apply glue to the four tabs and fold in place.



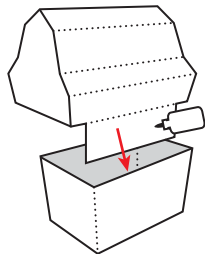
5. *Create the lid:* Apply glue to the four tabs at the base of the lid and fold in place.



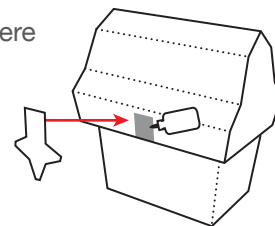
6. Apply glue to the remaining tabs and secure the top of the lid in place.



7. Attach the lid by gluing the hinge to the inside edge at the back of the base.



8. Glue the lock to the lid where indicated on front.



9. *Create the doubloons:* Fold and glue together. Allow to dry, and then cut along circles. You're done!

